



[Maproom](#)

[Data & Charts](#)

[myNKCA](#)

[More >>](#)

**What**

Median Housing Value

e.g. Asian, Income, Education, Housing

**Where**

90036

e.g. Los Angeles, 90017



**Economic**

**Demographic**

[Entire Report](#)

[Population](#)

[Ethnicity / Race](#)

[Age](#)

[People in Poverty](#)

[People in Poverty by Age](#)

[People with Disability](#)

[People with Disability by Age](#)

[Educational Attainment](#)

[Language Spoken at Home](#)

[Citizenship](#)

**Housing**

[Entire Report](#)

[Total Households](#)

[Renter vs. Owner occupied](#)

[Occupants Per Room](#)

[Year Structure Built](#)

[Year Moved In](#)

[Units In Structure](#)

[House Value](#)

[Percent of Income for Housing - Owner](#)

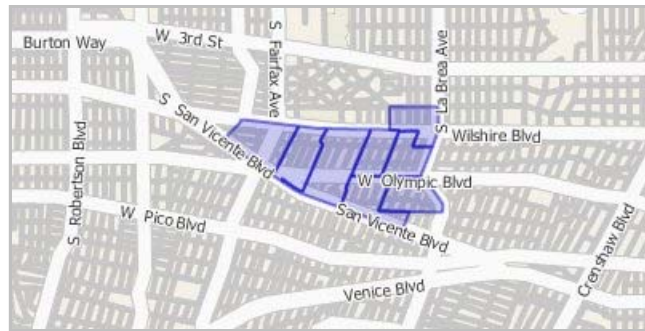
[Percent of Income](#)



**Map**

[Change location](#)

MMRA - Block Group



**Household Income**



**Chart**

Choose graph type : [Pie](#) | [Bar](#) | [Stacked bar](#)



**Table**

		MMRA - Block Group	Los Angeles County	California
Household Income: Less than	Total	846	533,819	1,615,869
	County Avg.	82		
	State Avg.	66		

[for Housing - Renter](#)



**Economic**

[Entire Report](#)

[Household Income](#)

[Types of Household Income](#)

[Industry](#)

[Occupation](#)

[Employment Status](#)

[Ratio of Income to Poverty Level](#)

<b>\$15,000</b> Total pre-tax annual income (less than \$15,000) of all members of a household.	<i>Percent</i>	16.44%	17.02%	14.04%
	<i>Total</i>	640	398,292	1,318,246
<b>Household Income: \$15,000 ~ 24,999</b> Total pre-tax annual income (between \$15,000 and \$24,999) of all members of a household.	<i>County Avg.</i>	61		
	<i>State Avg.</i>	53		
	<i>Percent</i>	12.44%	12.70%	11.45%
	<i>Total</i>	609	381,066	1,315,085
<b>Household Income: \$25,000 ~ 34,999</b> Total pre-tax annual income (between \$25,000 and \$34,999) of all members of a household.	<i>County Avg.</i>	58		
	<i>State Avg.</i>	53		
	<i>Percent</i>	11.84%	12.15%	11.42%
	<i>Total</i>	842	472,306	1,745,961
<b>Household Income: \$35,000 ~ 49,999</b> Total pre-tax annual income (between \$35,000 and \$49,999) of all members of a household.	<i>County Avg.</i>	71		
	<i>State Avg.</i>	70		
	<i>Percent</i>	16.37%	15.06%	15.17%
	<i>Total</i>	1,065	558,550	2,202,873
<b>Household Income: \$50,000 ~ 74,999</b> Total pre-tax annual income (between \$50,000 and \$74,999) of all members of a household.	<i>County Avg.</i>	83		
	<i>State Avg.</i>	87		
	<i>Percent</i>	20.70%	17.81%	19.14%
	<i>Total</i>	472	318,521	1,326,569
<b>Household Income: \$75,000 ~ \$99,999</b> Total pre-tax annual income (between \$75,000 and \$99,999) of all members of a household.	<i>County Avg.</i>	47		
	<i>State Avg.</i>	52		
	<i>Percent</i>	9.17%	10.16%	11.52%
	<i>Total</i>	335	276,972	1,192,618
<b>Household Income: \$100,000 ~ 149,999</b> Total pre-tax annual income (between \$100,000 and \$149,999) of all members of a household.	<i>County Avg.</i>	41		
	<i>State Avg.</i>	46		
	<i>Percent</i>	6.51%	8.83%	10.36%
	<i>Total</i>	336	196,753	794,799
<b>Household Income: \$150,000 and over</b> Total pre-tax annual income of all members (greater than 150,000) of a household.	<i>County Avg.</i>	28		
	<i>State Avg.</i>	30		
	<i>Percent</i>	6.53%	6.27%	6.90%
	<i>Total</i>			

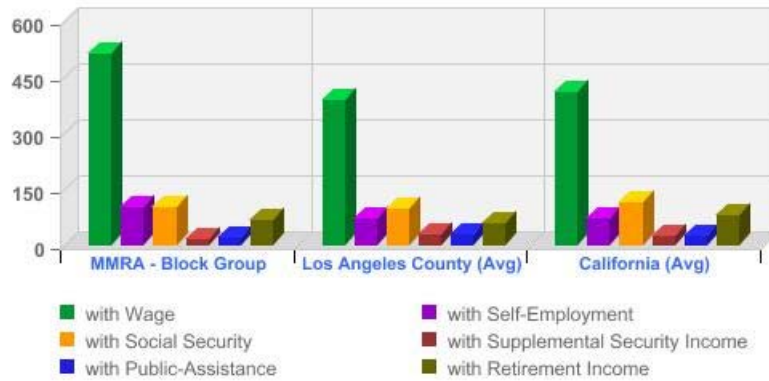
**Universe: Households**

**Types of Household Income**



**Chart**

Choose graph type : [Pie](#) | [Bar](#) | [Stacked bar](#)



[d](#)



**Table**

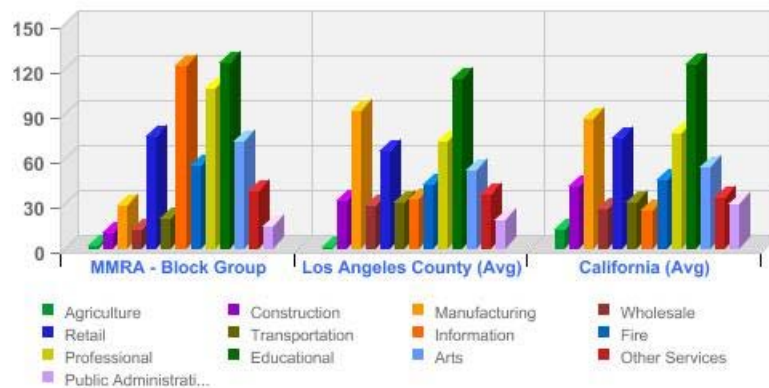
		MMRA - Block Group	Los Angeles County	California
<b>Household Income: with Wage</b> Total pre-tax annual income of all members of a household [with wages- total money earnings received for work performed as an employee]).	<i>Total</i>	4,129	2,482,433	9,061,005
	<i>County Avg.</i>	391		
	<i>State Avg.</i>	409		
	<i>Percent</i>	62.28%	57.52%	55.83%
<b>Household Income: with Self-Employment</b> Total pre-tax annual income of all members of a household [self employed- farm (net money income from the operation of a farm by a person on his or her own account, as an owner, renter, or sharecropper) and nonfarm (net money income receipts from one's own business, professional enterprise, or partnership) self-employment income].	<i>Total</i>	821	455,708	1,658,859
	<i>County Avg.</i>	72		
	<i>State Avg.</i>	75		
	<i>Percent</i>	12.38%	10.56%	10.22%
<b>Household Income: with Social Security</b> Total pre-tax annual income of all members of a household [with social security - social security pensions and survivors benefits, permanent disability insurance payments made by the Social Security Administration prior to deductions for medical insurance, and railroad retirement insurance checks from the U.S. government].	<i>Total</i>	819	618,121	2,565,234
	<i>County Avg.</i>	97		
	<i>State Avg.</i>	116		
	<i>Percent</i>	12.35%	14.32%	15.81%
<b>Household Income: with Supplemental Security Income</b> Total pre-tax annual income of all members of a household [with supplemental security - income from U.S. assistance program administered by the Social Security Administration that guarantees a minimum level of income for needy aged, blind, or disabled individuals.].	<i>Total</i>	132	179,952	607,106
	<i>County Avg.</i>	28		
	<i>State Avg.</i>	27		
	<i>Percent</i>	1.99%	4.17%	3.74%
<b>Household Income: with</b>	<i>Total</i>	182	199,328	563,409
	<i>County Avg.</i>	31		

<b>Public-Assistance</b> Total pre-tax annual income of all members of a household [with public assistance - general assistance and temporary assistance to needy families (TANF)].	State Avg.	25		
	Percent	2.75%	4.62%	3.47%
<b>Household Income: with Retirement Income</b> Total pre-tax annual income of all members of a household (with retirement).	Total	547	380,518	1,774,452
	County Avg.	60		
	State Avg.	80		
	Percent	8.25%	8.82%	10.93%

Universe: Households

Industry

 **Chart** Choose graph type : [Pie](#) | [Bar](#) | [Stacked bar](#)



 **Table**

		MMRA - Block Group	Los Angeles County	California
<b>Industry: Agriculture</b> The kind of business (agriculture) conducted by a person's employing organization.	Total	15	10,188	282,717
	County Avg.	2		
	State Avg.	13		
	Percent	0.27%	0.26%	1.92%
<b>Industry: Construction</b> The kind of business (construction) conducted by a person's employing organization.	Total	85	202,829	915,023
	County Avg.	32		
	State Avg.	41		
	Percent	1.55%	5.13%	6.22%
<b>Industry: Manufacturing</b>	Total	235	586,627	1,930,141
	County Avg.	92		
	State Avg.	87		
	Percent	4.29%	14.84%	13.11%

The kind of business (manufacturing) conducted by a person's employing organization.				
<b>Industry: Wholesale</b> The kind of business (wholesale) conducted by a person's employing organization.	<i>Total</i>	102	184,369	596,309
	<i>County Avg.</i>	29		
	<i>State Avg.</i>	27		
	<i>Percent</i>	1.86%	4.66%	4.05%
<b>Industry: Retail</b> The kind of business (retail) conducted by a person's employing organization.	<i>Total</i>	604	416,390	1,641,243
	<i>County Avg.</i>	66		
	<i>State Avg.</i>	74		
	<i>Percent</i>	11.03%	10.53%	11.15%
<b>Industry: Transportation</b> The kind of business (transportation) conducted by a person's employing organization.	<i>Total</i>	163	198,375	689,387
	<i>County Avg.</i>	31		
	<i>State Avg.</i>	31		
	<i>Percent</i>	2.98%	5.02%	4.68%
<b>Industry: Information</b> The kind of business (information) conducted by a person's employing organization.	<i>Total</i>	980	213,589	577,463
	<i>County Avg.</i>	34		
	<i>State Avg.</i>	26		
	<i>Percent</i>	17.90%	5.40%	3.92%
<b>Industry: Fire</b> The kind of business (FIRE) conducted by a person's employing organization.	<i>Total</i>	445	272,304	1,016,916
	<i>County Avg.</i>	43		
	<i>State Avg.</i>	46		
	<i>Percent</i>	8.13%	6.89%	6.91%
<b>Industry: Professional</b> The kind of business (professional) conducted by a person's employing organization.	<i>Total</i>	859	455,069	1,711,625
	<i>County Avg.</i>	72		
	<i>State Avg.</i>	77		
	<i>Percent</i>	15.69%	11.51%	11.63%
<b>Industry: Educational</b> The kind of business (educational) conducted by a person's employing organization.	<i>Total</i>	991	722,792	2,723,928
	<i>County Avg.</i>	114		
	<i>State Avg.</i>	123		
	<i>Percent</i>	18.10%	18.28%	18.51%
<b>Industry: Arts</b> The kind of business (arts) conducted by a person's employing organization.	<i>Total</i>	573	332,753	1,204,211
	<i>County Avg.</i>	52		
	<i>State Avg.</i>	54		
	<i>Percent</i>	10.46%	8.42%	8.18%
<b>Industry: Other Services</b> The kind of business (other services) conducted by a person's employing organization.	<i>Total</i>	305	233,193	761,154
	<i>County Avg.</i>	37		
	<i>State Avg.</i>	34		
	<i>Percent</i>	5.57%	5.90%	5.17%
<b>Industry: Public Administration</b>	<i>Total</i>	119	124,937	668,811
	<i>County Avg.</i>	20		
	<i>State Avg.</i>	30		

The kind of business (public administration) conducted by a person's employing organization.	Percent	2.17%	3.16%	4.54%

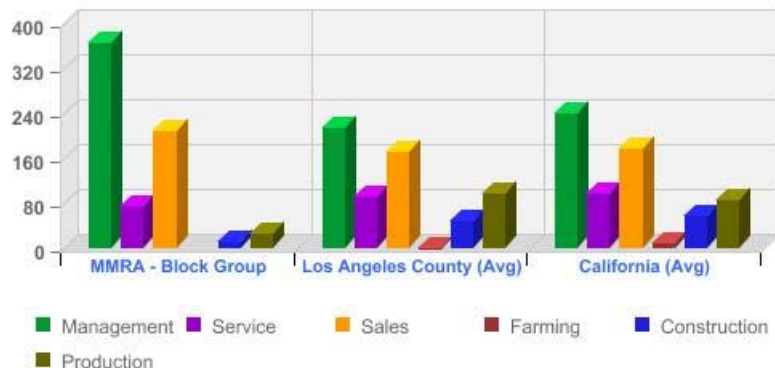
*Universe: Employed civilian population 16 years and over.*

**Occupation**



Chart

Choose graph type : [Pie](#) | [Bar](#) | [Stacked bar](#)



[d](#)



Table

		MMRA - Block Group	Los Angeles County	California
<b>Occupation: Management</b> The kind of work (management) the person does on the job.	Total	2,924	1,355,973	5,295,069
	County Avg.	214		
	State Avg.	239		
	Percent	53.40%	34.30%	35.97%
<b>Occupation: Service</b> The kind of work (service) the person does on the job.	Total	595	580,809	2,173,874
	County Avg.	91		
	State Avg.	98		
	Percent	10.87%	14.69%	14.77%
<b>Occupation: Sales</b> The kind of work (sales) the person does on the job.	Total	1,663	1,090,059	3,939,383
	County Avg.	172		
	State Avg.	178		
	Percent	30.37%	27.57%	26.76%
<b>Occupation: Farming</b> The kind of work (farming) the person does on the job.	Total	0	6,650	196,695
	County Avg.	1		
	State Avg.	9		
	Percent	0%	0.17%	1.34%
<b>Occupation: Construction</b>	Total	97	306,450	1,239,160
	County Avg.	48		

The kind of work (construction) the person does on the job.	<i>State Avg.</i>	56		
	<i>Percent</i>	1.77%	7.75%	8.42%
<b>Occupation: Production</b> The kind of work (production) the person does on the job.	<i>Total</i>	197	613,474	1,874,747
	<i>County Avg.</i>	97		
	<i>State Avg.</i>	85		
	<i>Percent</i>	3.60%	15.52%	12.74%

*Universe: Employed civilian population 16 years and over.*

**Employment Status**

 **Chart** Choose graph type : [Pie](#) | [Bar](#) | [Stacked bar](#)



[d](#)

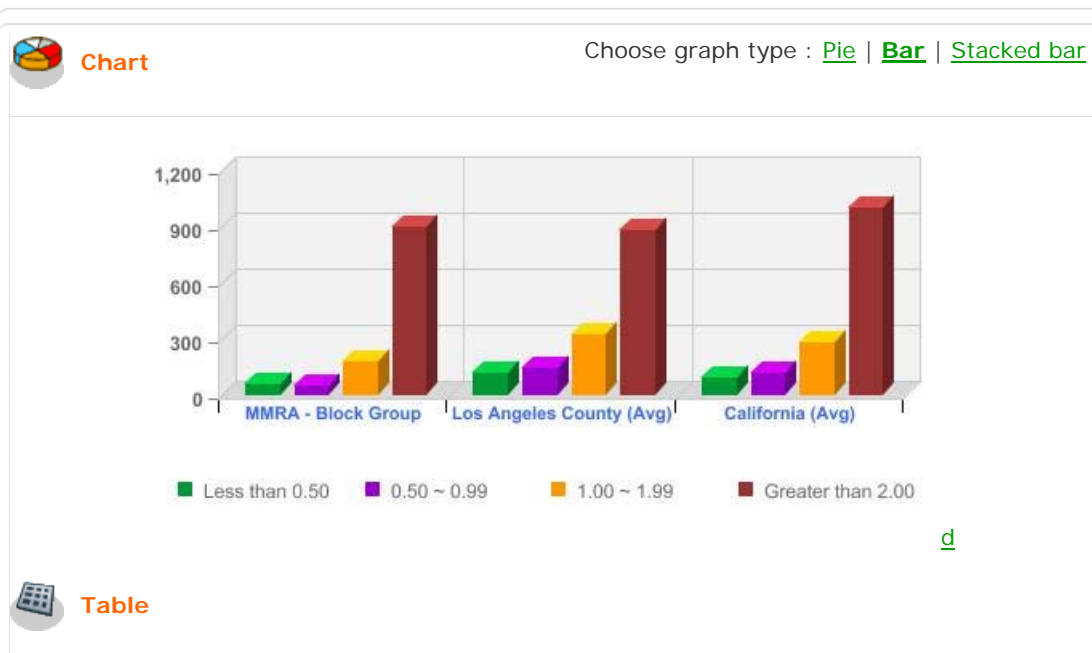
 **Table**

		MMRA - Block Group	Los Angeles County	California
<b>Male civilian unemployed</b> All male civilians 16 years old and over are classified as unemployed if they (1) were neither "at work" nor "with a job but not at work" during the reference week, and (2) were actively looking for work during the last 4 weeks, and (3) were available to accept a job. Also included as unemployed are civilians who did not work at all during the reference week, were waiting to be called back to a job from which they had been laid off, and were available for work except for temporary illness.	<i>Total</i>	174	185,919	587,862
	<i>County Avg.</i>	29		
	<i>State Avg.</i>	27		
	<i>Percent</i>	45.55%	52.47%	52.95%
<b>Female civilian unemployed</b>	<i>Total</i>	208	168,428	522,412
	<i>County Avg.</i>	27		

All female civilians 16 years old and over are classified as unemployed if they (1) were neither "at work" nor "with a job but not at work" during the reference week, and (2) were actively looking for work during the last 4 weeks, and (3) were available to accept a job. Also included as unemployed are civilians who did not work at all during the reference week, were waiting to be called back to a job from which they had been laid off, and were available for work except for temporary illness.				
	<i>State Avg.</i>	24		
	<i>Percent</i>	54.45%	47.53%	47.05%

**Universe: Population 16 years and over**

**Ratio of Income to Poverty Level**



		MMRA - Block Group	Los Angeles County	California
<b>Ratio of Income to Poverty: Less than 0.50</b> The ratio of income to poverty (less than 0.5) compares a family's income with its poverty threshold, and expresses that comparison as a ratio.	<i>Total</i>	472	749,685	2,081,798
	<i>County Avg.</i>	118		
	<i>State Avg.</i>	94		
	<i>Percent</i>	4.97%	8.02%	6.29%
<b>Ratio of Income to Poverty: 0.50</b>	<i>Total</i>	391	924,914	2,624,332
	<i>County Avg.</i>	146		
	<i>State Avg.</i>	119		
	<i>Percent</i>	4.12%	9.89%	7.93%

<p><b>~ 0.99</b> The ratio of income to poverty (between 0.5 and 0.99) compares a family's income with its poverty threshold, and expresses that comparison as a ratio.</p>				
	<i>Total</i>	1,430	2,060,342	6,237,006
	<i>County Avg.</i>	324		
	<i>State Avg.</i>	282		
<p><b>Ratio of Income to Poverty: 1.00 ~ 1.99</b> The ratio of income to poverty (between 1 and 1.99) compares a family's income with its poverty threshold, and expresses that comparison as a ratio.</p>	<i>Percent</i>	15.07%	22.04%	18.84%
	<i>Total</i>	7,198	5,614,830	22,156,908
	<i>County Avg.</i>	884		
	<i>State Avg.</i>	1,001		
<p><b>Ratio of Income to Poverty: Greater than 2.00</b> The ratio of income to poverty (greater than 2.0) compares a family's income with its poverty threshold, and expresses that comparison as a ratio.</p>	<i>Percent</i>	75.84%	60.05%	66.94%
	<b>Universe: Population for whom poverty status is determined</b>			

The census blockgroup data (2000) has been compiled from SF1 and SF3 sources. More information can be accessed from the Census website, <http://www.census.gov>.

 [about us](#)

 [contact us](#)

 [help](#)